

Part Number: Y-LNR-BRKT-BAG & HD-BOX-1H-Y-LNR

Description: Saddle Bags & Trunk Box

Fitment: 2006 Yamaha Road Liner & Stratoliner

Revision: 3



Tools Required	Parts List
<p>5/8" Deep socket or Combination wrench 9/16" Deep socket or Combination wrench 12mm Socket wrench 3mm Hex Key (Allen wrench) 6mm Hex key (Allen wrench) 14mm Hex key (Allen wrench) 3/32 Hex key (Allen wrench)</p>	<p>SADDLE BAGS 4 #P10390 Stainless steel studs 2 #P10391 Stainless steel spacers (use without sissy bar) 2 #P10392 Stainless steel spacers (use without sissy bar) 4 #P10071 Stainless steel spacers (use with quick release sissy bar) 2 #A00715 Chrome lower brackets 2 #P10188 1/2" aluminum spacers 2 10mm x 1.25 x 55mm Hex head bolts 6 3/8" flat washers 6 3/8" split lock washers 6 3/8" x 16 Chrome Acorn nuts 1 #A00789 Mounting bracket 2 8mm x 1.25 x 20mm Chrome button head Allen screws 6 8mm Flat washers 2 8mm split lock washers</p> <p>TRUNK BOX 1 #A00815 Mounting bracket 6 1/4" x 20 x 1" Chrome button head Allen screws 6 1/4" flat washers 6 1/4" split lock washers</p>

NOTE: We recommend the use of Loctite® or similar thread lock product when assembling parts on your motorcycle.

1. If you are installing Corbin saddlebags on a Stratoliner model, you will first need to remove the Yamaha bags. When removing the bag holders from the motorcycle, you will be taking out the same bolts used for the Corbin saddlebag installation, so don't bother to reinstall them at this time.

2. Refer to Figure 1 and remove the bolts from the positions shown at arrows.

3. Refer to Figure 2. **If your bike is a Stratoliner, the bag hanger goes behind the footpeg mount on both sides and acts as a spacer. If you're working on a Roadliner, there will be spacers behind the footpeg hanger on the LEFT side of the bike. You can reuse these spacers with the Corbin bags or the ones provided in the installation kit.**

4. With the footpeg bracket removed, add the Corbin supplied lower bracket. On the LEFT side of the motorcycle, add the included spacers (or your Yamaha ones) as shown in Figure 3.



5. Reinstall the footpeg hanger using the supplied bolts and tighten to 12 ft. lbs. Notice the orientation of the Corbin bracket pointing to the rear of the bike with the stud facing out (Figure 4). Don't forget Loctite® on these bolts!

NOTE: If you had the Yamaha bags previously installed on your motorcycle, you do not need the supplied longer bolts. If you did not have Yamaha bags, then the supplied longer bolts are needed.

6. Repeat the lower bracket installation on the right side of the bike WITHOUT spacers installed.

7. Remove the two bolts indicated in the chrome fender rail (if you haven't already done so to remove the Yamaha bag hanger).

8. Replace the fender rail bolts with the supplied stainless steel studs, flat washers and spacers (Figure 5). The longer spacer (#P10391) goes in the FRONT position and the shorter spacer (#P10392) goes in the REAR position on both sides of the bike. Use Loctite® and tighten to 10 ft. lbs.

NOTE: When using the quick release sissy bar, you will need to add the provided spacers (#P10071) in between the stainless steel studs and the quick release spacers.

NOTE: If using a sissy bar, you will not be using the supplied spacers.

9. Now install Corbin bracket #A00789, using the rear light mounting location underneath the fender, using the stock bolts. (Figure 6). Use Loctite® and tighten to 8 ft. lbs.

10. You are now ready to install the saddlebags. Carefully align the bags with the three mounting studs and secure with a flat washer, lock washer and chrome acorn nut. Again, we recommend the use of threadlock material.

11. Next secure the saddlebags to the mounting bracket you just installed, using the supplied 8mm x 1.25 x 20 mm Chrome button head Allen bolts and lock washers. Tighten to 8 ft. lbs.

NOTE: If using a sissy bar or trunk box, remove the cap on the saddle bag by unscrewing two button head allen screws with a 3/32 Allen wrench. *Figure 7*

10. That's it, you're ready to roll. Have a great ride and keep the Corbin side up!



FIG 3



FIG 4



FIG 5

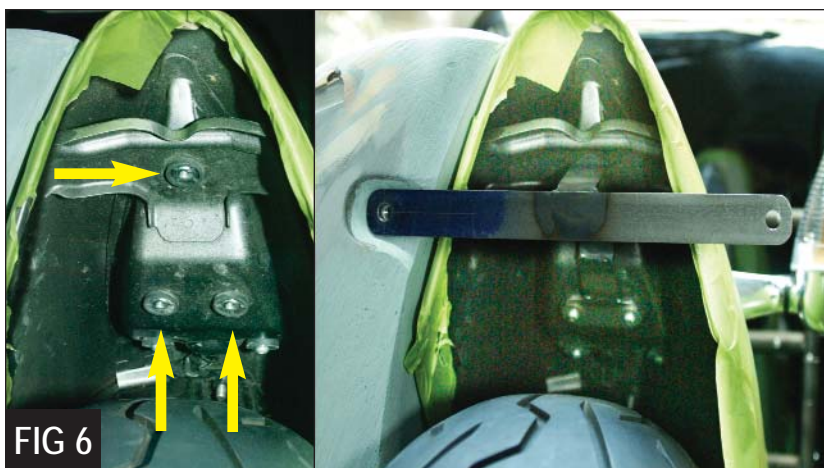


FIG 6

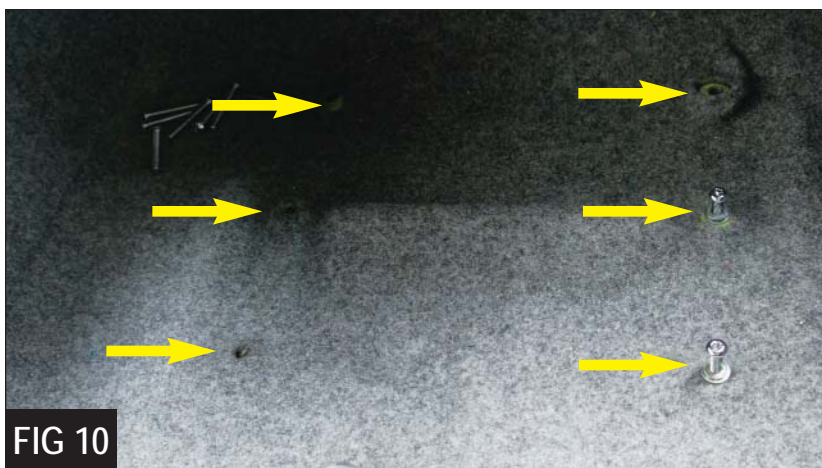
INSTALLATION OF THE TRUNK BOX

1. Refer to Figure 8 and remove the bolts from the positions shown at arrows.
2. Position the trunk mounting bracket (#A00815) onto the fender rail and secure with the supplied stainless steel studs and flat washers. Tighten to 10 ft. lbs. Figure 9.

NOTE: You might have to spread trunk mounting bracket to get over the struts and you might need to wiggle the fender a bit to get the struts to line up.

NOTE: Get all 4 bolts started before tightening.

3. Line up the six holes on the trunk to the holes on the mounting bracket. Secure with the supplied 1/4 x 20 x 1" button head Allen bolts, lock washer and flat washer. Tighten to 6 ft. lbs. (Figure 10)



Questions? Give us a holler...
800-223-4332
tech@corbin.com