

**Part Number:** H-ST-13-F(E), H-ST-13-SMUG,  
H-ST-13(-E), H-ST-13-C(E)

**Corbin**

**Fitment:** Honda ST 1300 Police  
Motorcycle Adaptation

**Revision:** 1

## Adapting Honda ST 1300 Police Bike to Accept Corbin Saddles

1. The first hurdle you are going to have is removing the large radio box brackets from the police model subframe.

**Figure 1- Red & Blue Arrows**

If you are using a Corbin saddle, you only need to cut off the horizontal, outward facing "Ears" from the front two brackets.

**Figure 1- Red arrows**

**Figure 2**

If you are using an OEM or other seat, you will need to remove the entire bracket and also the two brackets shown in

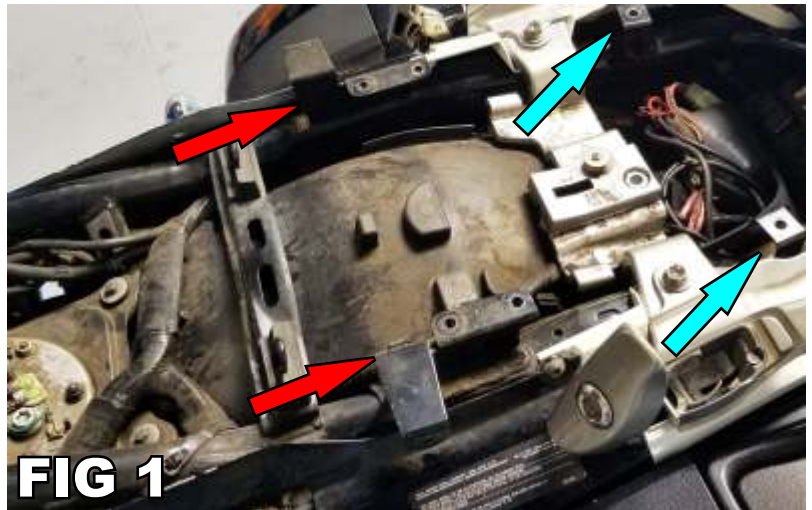
**Figure 1- Blue Arrows.**

2. Your ST likely does not have a seat latch or any of the components required to accept a standard seat. Confirm this by unlocking the Left locking lever on the grab rail and check for the presence of a release lever.

**Figure 3** shows the absence of a locking lever.

3. If these components are indeed missing, you will need to get them from your local Honda dealer or order them from a Honda dealer online.

The microfiche image on the next page shows the items you will need. When we purchased a full set, the cost was roughly \$40 plus tax & shipping.



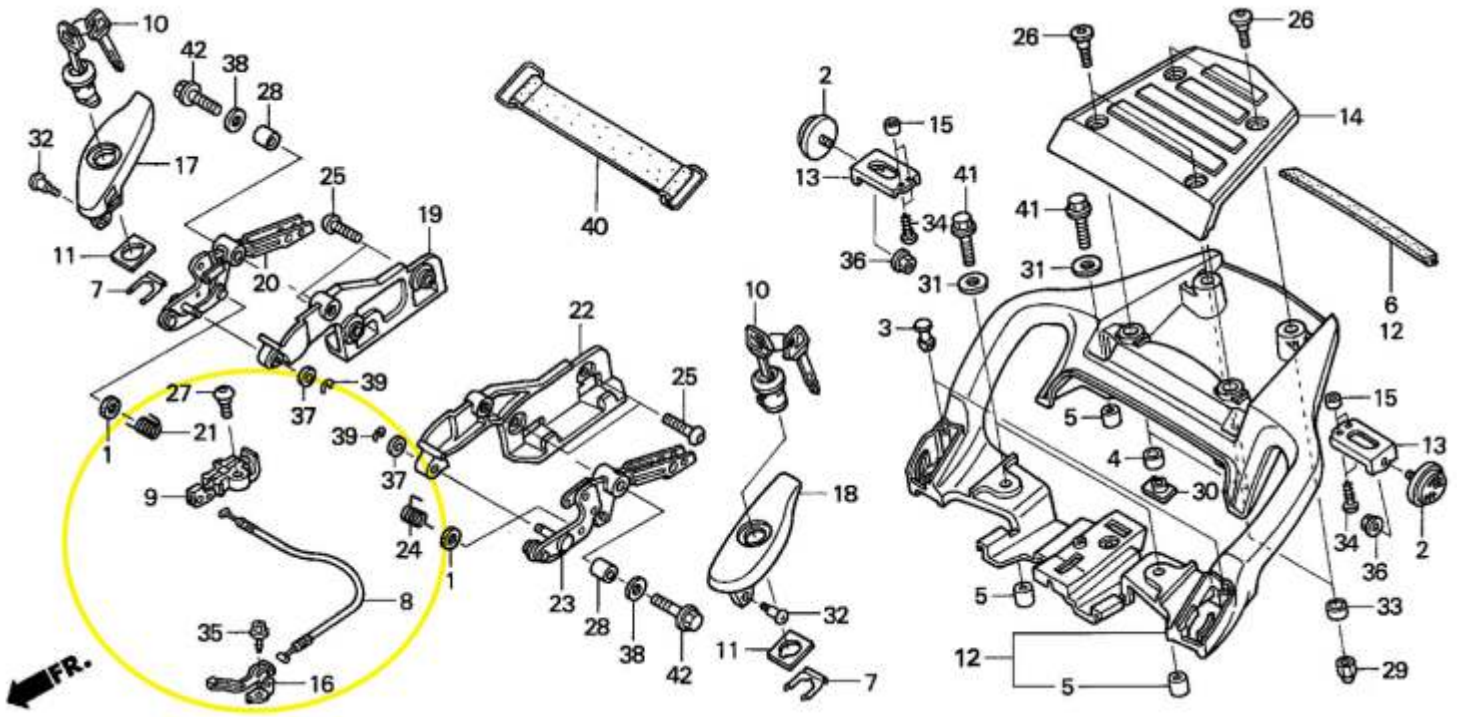
**FIG 1**



**FIG 2**



**FIG 3**



**You Will Need:**

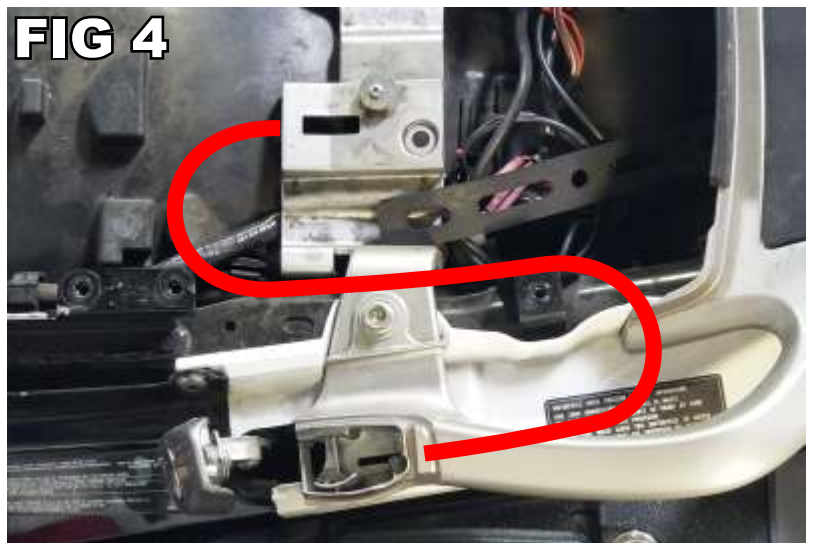
- |                        |                       |                      |                       |
|------------------------|-----------------------|----------------------|-----------------------|
| <b>Seat Opener</b>     | <b>#77330-MCS-G00</b> | <b>Seat Catch</b>    | <b>#77220-KY6-010</b> |
| <b>Seat Lock Cable</b> | <b>#77156-MCS-G00</b> | <b>Special Screw</b> | <b>#90106-MBL-610</b> |
| <b>Tapping Screw</b>   | <b>#93903-24320</b>   |                      |                       |

**4.** Installing the cable and latch is a little tricky and you will need to remove the grab rail to mount the lever and run the cable.

**5.** Run the cable and install the latch as shown in **Figure 4**. Latch installs on the bottom of the bracket and is secured from the top. The cable will make an “S” shape from the lever to the latch.

Use a little locktite (or similar) on the latch bolt and tighten securely.

**6.** Your ST 1300 Police model is now ready to accept a standard ST 1300 saddle. If you are installing a Corbin heated seat, please refer to the provided directions to install the wiring pigtail.



**800-538-7035**  
 corbin01@corbin.com