

Part Number: HD-VRSCAW-7-F & HD-VRSCAW-7-R

Description: Front & Rear Saddles

Fitment: 2007 Harley-Davidson V-Rod VRSCAW

Revision: 2



Tools Required

13mm Combination wrench
10mm Open wrench
5mm Open wrench

Parts List

1 #A00935 Front seat latch plate
1 Plastic washer
1 1/4" Chrome flat washer
1 m6 Nylock nut
1 m5 x 16 Hex head cap screw
1 m5 Flat washer
1 Nylock washer (Rear Seat)

NOTE: We recommend the use of Loctite® or other threadlock compound when assembling parts on your motorcycle.

1. Remove your stock seat by first unhooking the cable off of the rear seat base. (Figure 1)
2. Remove the plastic clip on the stock seat (Figure 2), then slide seat back.
3. Next, remove the stock cable and reuse it on the Corbin front seat. Set aside the cable and plastic clip because you will be reusing them later.

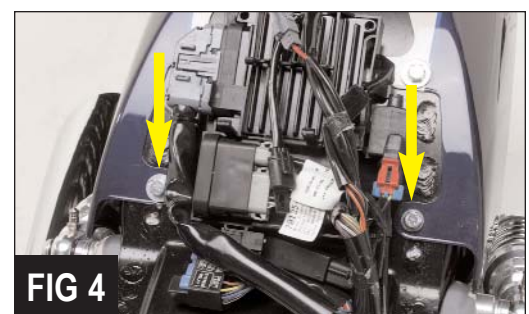
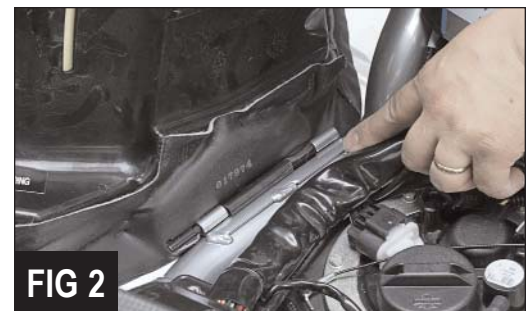
NOTE: A good tip on removing the cable is to put a piece of tape on the end then slide it out. (Figure 3)

4. Remove the rear seat by removing the two bolts with a 10mm combination wrench and a 13mm open wrench (Refer back to Figure 1). Next, lift up and pull forward.

NOTE: Place the left bolt back onto the chassis and discard the latch pin that was on the right side.

5. Remove the two upmost bolts that holds the fender to the chassis, using a 13mm combination wrench. (Figure 4)

6. Install the Corbin front seat latch plate by first putting on the supplied nylock washer where the latch pin was (Figure 5), then place the bracket on top and secure with the supplied 6mm flat washer and nylock nut (Figure 6). Do not tighten yet.



7. Attach the stock cable to the front seat by using the supplied 5mm flat washer and hex head bolt (*Figure 7*). Use Loctite.

8. If you will be using the rider's backrest on the rear saddle, install it before latching seat to bike. There is a safety screw that must be installed and you cannot reach it with the seat mounted on.

9. To install the rear saddle, slide forward the rear bracket on the saddle onto the rear pin on the bike (*Figure 8*).

NOTE: Make sure all wires are neatly out of the way.

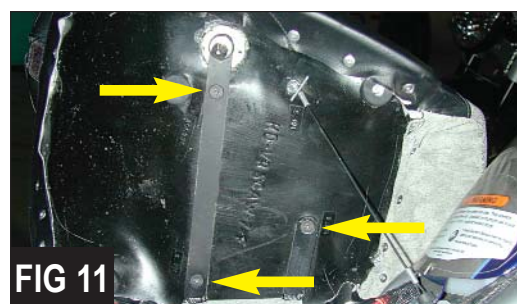
10. Secure the right side of rear seat to the front seat latch plate with the stock bolt and flat washer (*Figure 9*). On the left side, place the supplied nylock washer between the chassis and the tab and secure with the stock bolt and flat washer. Tighten to 10 ft. lbs.

11. Slide front seat in place where you removed the stock seat and secure with the stock plastic clip (*Refer to Figure 2*).

12. Attach the cable on the front seat near the rear of the gas tank (*Figure 10*).

13. Snug bolts in place, close front seat to set the bracket in place, then tighten to 8 ft. lbs.

NOTE: If you have saddlebags on your motorcycle and you want to remove your Corbin saddle, you must loosen the three Allen bolts on the bottom of the saddle in order to slide the seat off (*Figure 11*).



Questions? Give us a holler...
800-223-4332
tech@corbin.com