

Part Number: H-RUNE-BAG & H-RUNE-HDBOX1H

Description: Saddle Bags & Trunk Box

Fitment: 2005+ Honda Rune

Revision: 1



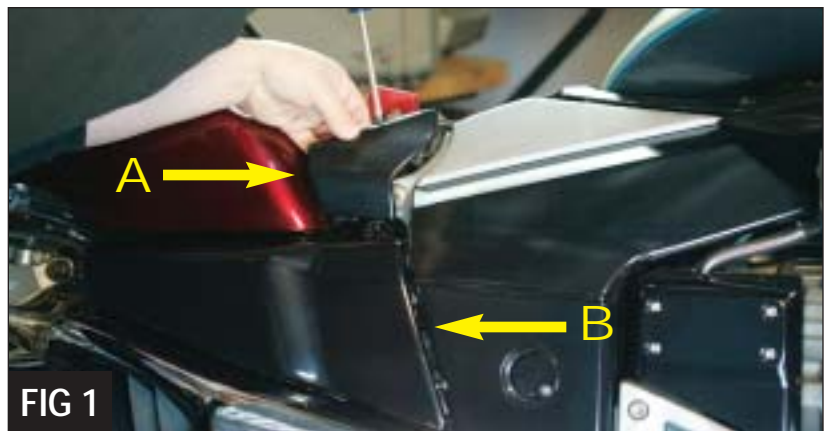
Tools Required	Parts List	
3/32 Hex key (Allen wrench) Phillips Screwdriver 19mm socket wrench 19mm open wrench 12mm socket wrench Wire Crimper or Pliers	SADDLE BAGS 1 #A00848 Right foot peg mounting bracket 1 #A00847 Left foot peg mounting bracket 2 8/32 x 1 Phillips Screws 1 #P10472 Stainless steel spacers (long) 1 #P10475 Stainless steel spacers (short) 4 8/32 x 1/2 Chrome button head Allen screws 1 8mm x 1.25 x 70mm Hex head bolts 1 8mm Split lock washer 1 8mm Flat washer 2 12mm x 1.25 x 60mm Hex head bolts 7 12mm Flat washers 2 12mm Nylock nuts 6 3/8" x 16 Chrome Acorn nuts 6 3/8" Split lock washers 6 3/8" Flat washers 2 Spade connectors 4 Male spade connectors 4 Female spade connectors 2 Side covers	1 #A00850 Right bag mounting bracket 1 #A00849 Left bag mounting bracket 4 10mm x 1.25 x 70mm Hex head bolts
		TRUNK BOX 1 #A00851 Left Mounting bracket 1 #A00852 Right Mounting bracket 6 1/4" x 20 x 1 1/2" Chrome button head Allen screws 2 3/8" x 16 x 1 1/2" Chrome button head Allen screws 2 3/8" x 16 1 3/4" Chrome button head Allen screws 6 1/4" x 20 flat washers 4 3/8" split lock washers

NOTE: We recommend the use of Loctite® or similar thread lock product when assembling parts on your motorcycle.

1. Start by removing your stock seat.
2. Remove the top side covers using a phillips screwdriver. (Figure 1a)
3. Remove the bottom side covers by removing the screw on the top of the cover. Tug the bottom outward to release it from the rubber grommets, then slide the cover back and down to unhook it off the fender. (Figure 1b)

NOTE: You will not be reusing the bottom side covers, but you will be reusing the screw that secured the side cover to the sub frame.

4. Next you are going to install the right foot peg mounting bracket (#A00848).



5. Start by removing and discarding the bottom stock hex bolt, washer and nut on the sub frame using a 19mm socket wrench and an open wrench.

NOTE: You will need to open the plastic wire clip behind the stock bolt, to be able to reach the nut with the 19mm open wrench. (Figure 2)

NOTE: Picture is showing the clip off of the bike for illustration.

6. Remove the bolt on the exhaust bracket using a 12mm socket or open wrench.

7. Secure the right foot peg mounting bracket using the supplied 12mm x 1.25 x 60mm hex head bolt, flat washer, three flat washers (to be used as a spacer) and nylock nut in the top position (Figure 3). Re-install the stock bolt that you removed from the exhaust bracket (Figure 4). Use Loctite® and tighten to 12 ft. lbs.

8. Secure the plastic wire clip that you opened in step 5.

9. To install the left foot peg bracket, remove and discard the stock hex head bolts, washers and nuts from the bottom rear chassis. Secure bracket #A00847 with the supplied bolts, washers, lock washer and nylock nut. In the first position, place the 12mm x 1.25 x 60mm hex head bolts and 12mm flat washer through the hole and secure with another 12mm flat washer and nylock nut. Tighten to 12 ft. lbs. In the second position, place the 8mm x 1.25 x 70mm hex head bolts and 8mm lock washer through the second hole. Place a 8mm flat washer between the bracket and the sub frame and tighten to 10 ft. lbs. (Figure 5)

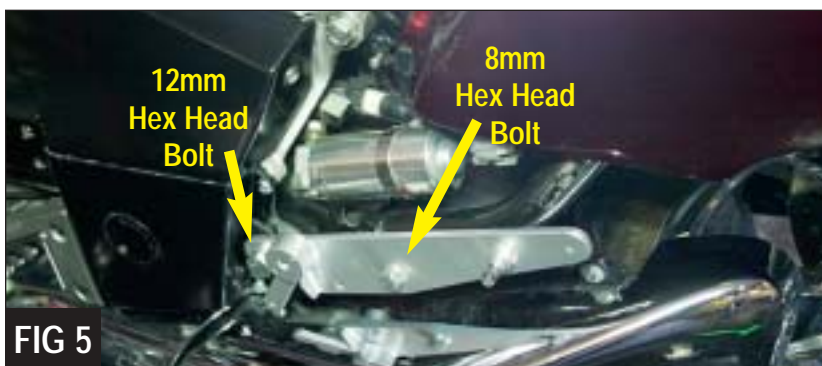
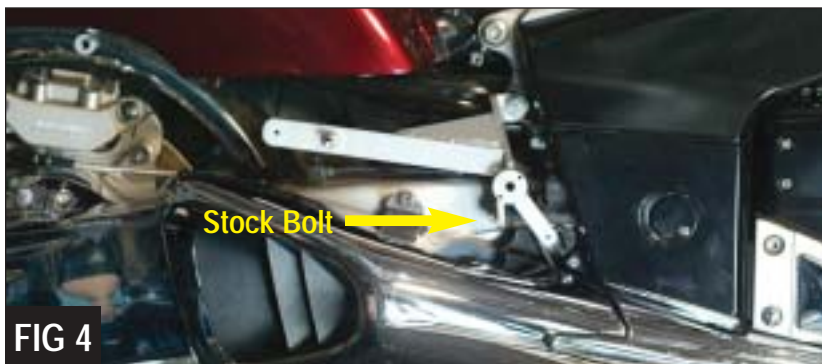
10. Disconnect the rear fender tail light harness located on the left side. (Figure 6)

11. Remove the two screws on the front fender. (Figure 7)

12. Remove the two hex head bolts from the bottom left and right side of the rear fender. Discard stock bolts. (Figure 8)

13. Remove the fender.

14. Remove the turn signals by first cutting the wires, leaving approximately 2.5" (leave enough wire for connector ends). Then using a 8mm open wrench, remove the two bolts holding the turn signal onto the fender. (Figure 9)



15. Next, use a 3/32 Allen key to remove the lens from the turn signal housing.

16. Put the male spade connectors onto the wires in the fender and the female connectors onto the lens on the saddlebags (where you cut the wires in step 14).

17. Install the lens onto the saddlebags, using the supplied 8/32 x 1" Phillips screws. (Figure 10)

18. Put the spade extensions onto the connectors in the fender and run the wire out through the square front hole where you removed the turn signals. (Figure 11)

19. Place the fender back onto the sub frame.

20. Install the right bag mounting bracket (#A00850) and left bag mounting bracket (#A00849) onto the sub frame, using the supplied 10mm x 1.25 x 70mm Hex head bolts. Use Loctite® and tighten to 10 ft. lbs. (Figure 12)

21. Re-install the stock bolts onto the front part of the fender.

22. Re-connect the wire harness.

23. Install the supplied stainless steel studs onto the mounting bracket. The longer stud (#P10472) goes on the right side and the shorter stud (#P10475) goes on the left side. Use Loctite® and tighten to 12 ft. lbs. (Figure 13)

24. Install the supplied side covers with the stock bolt and the two supplied Allen bolts. Use a mild strength Loctite® on these bolts. (Figure 14)

NOTE: Use the supplied round foot peg mount caps to cover the location if the passenger foot peg or floor boards are not being used.

25. Re-install the stock top side cover, reusing the stock Phillips screw.

26. Install the caps onto the bags with the supplied Allen bolts if you will not be using a sissy bar or trunk box.

27. Connect the wires on the saddlebags to the wires on the fender.

28. Carefully align the bags with the three mounting studs and secure with a flat washer, lock washer and chrome acorn nut. Again, we recommend the use of threadlock material. Tighten to 8 ft. lbs. (Figure 15)



FIG 8

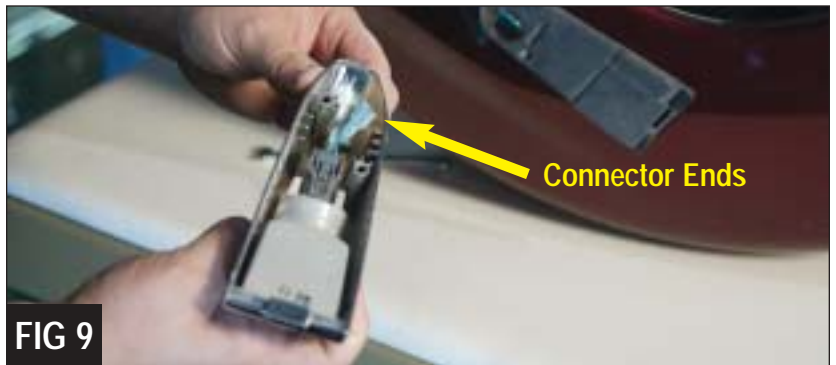


FIG 9



FIG 10

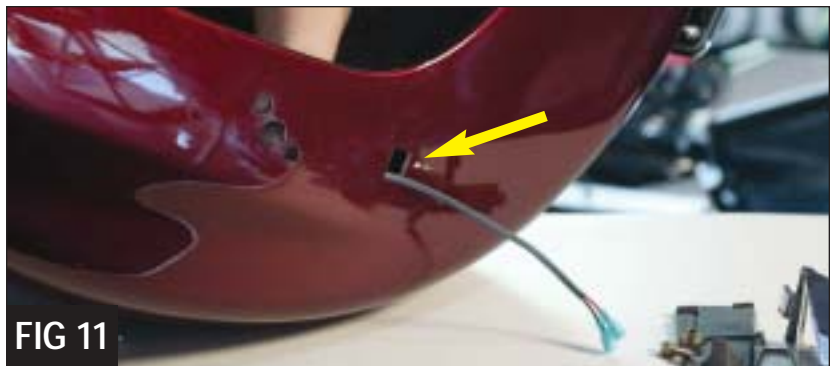


FIG 11

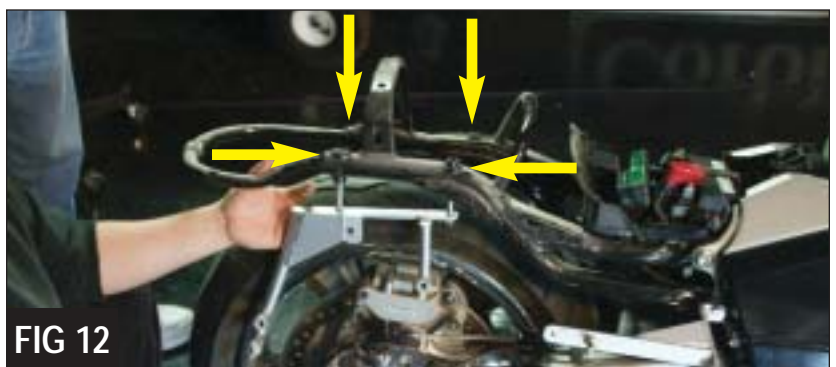
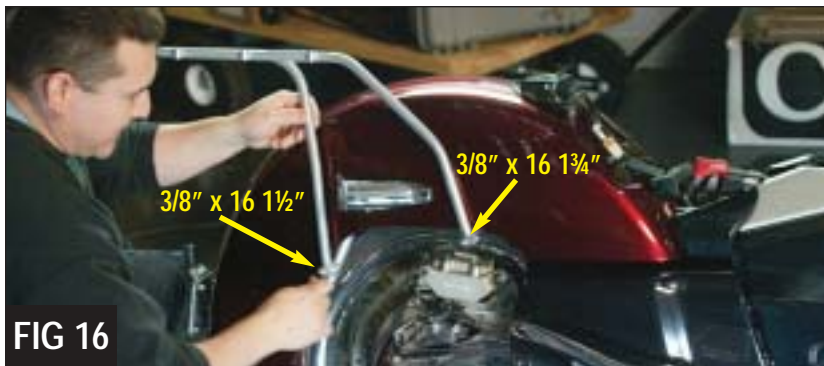
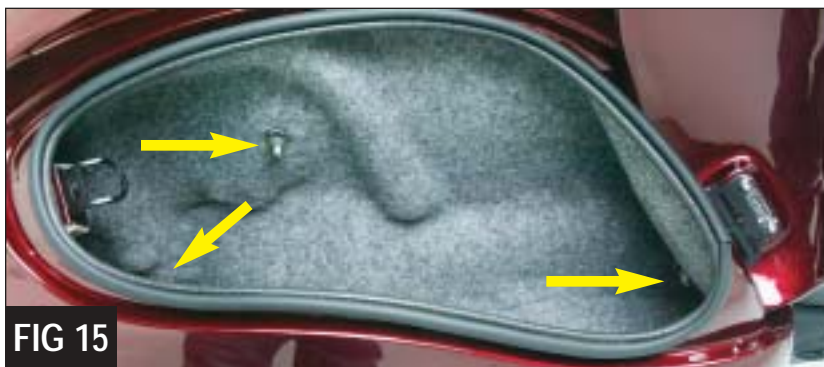
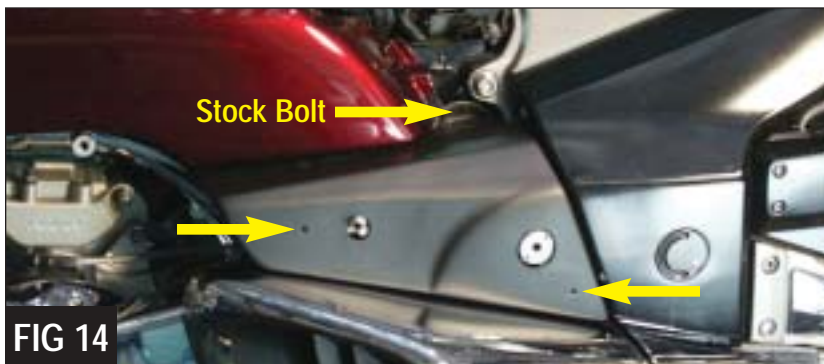


FIG 12

INSTALLATION OF THE TRUNK BOX

1. Refer to Figure 8 and remove the two hex head bolts from the bottom left and right side of the rear fender. Discard stock bolts.
2. Install the right bag mounting bracket (#A00850) and left bag mounting bracket (#A00849) onto the sub frame, using the supplied 10mm x 1.25 x 70mm Hex head bolts. Use Loctite® and tighten to 10 ft. lbs.
3. Position the right trunk mounting bracket (#A00852) and the left trunk mounting bracket (#A00851) onto the bag mounting brackets and secure with the supplied 3/8" x 16 1/4" Chrome button head Allen screws, 3/8" x 16 x 1/2" Chrome button head Allen screws and split lock washers, using a 7/32" Allen key. Tighten to 10 ft. lbs. (Figure 16)
4. Use the supplied acorn nut on the extra mounting point.
5. Line up the six holes on the trunk to the holes on the mounting bracket. Secure with the supplied 1/4 x 20 x 1/2" button head Allen bolts and flat washer. Tighten to 6 ft. lbs. (Figure 17)



Questions? Give us a holler...
800-223-4332
tech@corbin.com